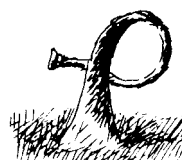
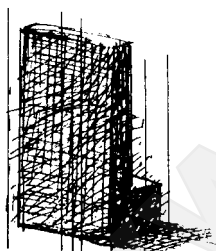
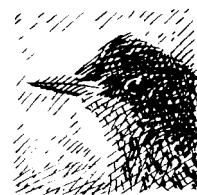
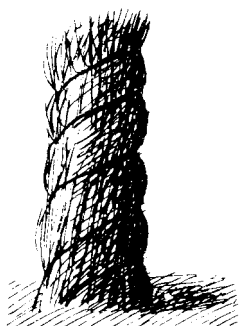


Gradient



GRADIENT
SW-63
SUBWOOFER
FOR QUAD
ESL-63



The Quad ESL-63 is probably the most accurate loudspeaker in the world. Combined with the Gradient dipole subwoofer SW-63, a true High End speaker is born.

The units integrate well both acoustically and even physically. The bass becomes uniform without boom or colouration. The reduced low frequency strain allows the ESL to produce 10 dB more of its pure sound.

For the first time you can play large orchestral works with clarity and dynamics at the same time, even in a large room.

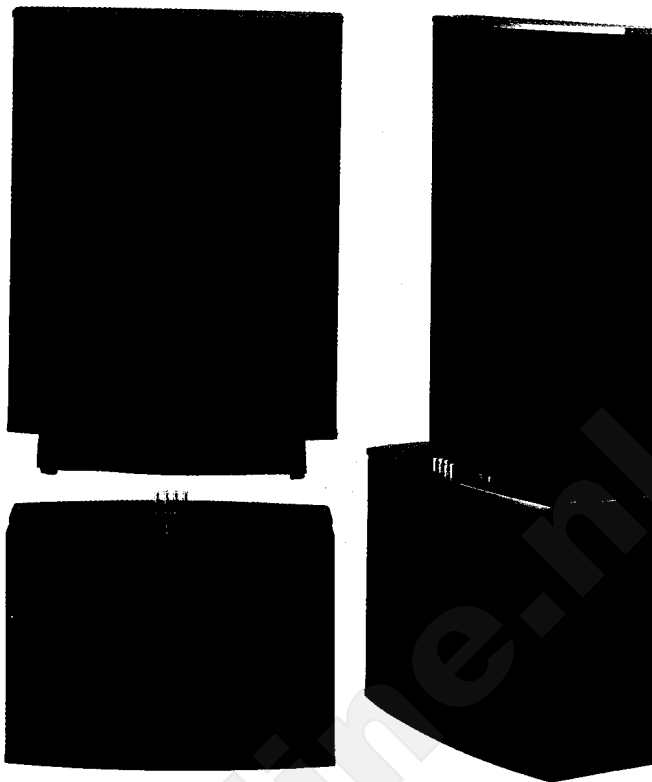
BENEFITS OF THE SYSTEM

- The subwoofer is acoustically perfectly integrated with the QUAD because it relies on dipole operation like the QUAD.
- Dynamic, well controlled bass reproduction down to 28 Hz (-3 dB).
- Adjustable bass level enables perfect room / taste matching.
- The system is able to go 10 dB louder than the ESL-63s by themselves.
- The reduced low frequency strain on the ESL-63 results in a more accurate and cleaner midrange reproduction.
- The QUADs are placed on top of the SW-63s so there is no need for stands. The SW-63 physically raises the acoustical centre of the ESL to optimum listening height.
- Free choice of amplifiers. The SW-63 is an easy load and it is possible to choose either 4 Ω or 16 Ω nominal impedance depending on the gain and the current / voltage capability of the amplifier.
- The active crossover includes a subwoofer mono switch. Mono operation reduces excessive cone excursions when playing warped records.
- Certain recordings may sound slightly harsh on the ESLs. The crossover unit also includes an upper midrange attenuation switch. Attenuation is 0.5 dB or 1.0 dB depending on taste.
- Reviews: The Absolute Sound, Issue 73, Sept / Oct 1991; HiFi News & Record Review, March 1992; Gramophone, March 1993; Stereo Oktober 1991; la nouvelle Revue Du Son, No 165, Fevrier 1993

EASY SETUP

Adding the subwoofers is easy. In addition to the SW-63s one only needs one extra stereo power amplifier, two pairs of RCA cables and one pair of speaker cables.

The SW-63 is available with black or brown grille cloth.



CROSSOVER UNIT CONTROL FUNCTIONS

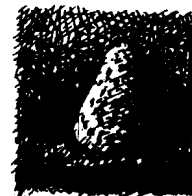
- SW LEVEL: Subwoofer level control. Adjustment range +/-10 dB.
- SW MODE: Subwoofer stereo / mono switch.
- MID ADJ: Attenuates upper mid frequencies by 1.0 dB (I) or 0.5 dB (II).



SPECIFICATION

SW-63 SUBWOOFER UNITS

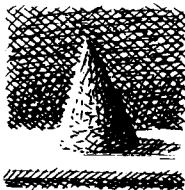
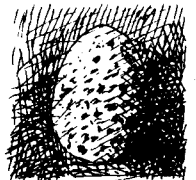
Impedance:	selectable, nominal 4 Ω or 16 Ω
Radiation pattern:	dipole
Drive units:	2 pcs 300 mm long throw dynamic drivers
Max. input voltage:	thermal limit 90 V programme when 16 Ω selected, mechanical limit depends on frequency
Amplifier recommendation:	50...250 W / 8 Ω
Dimensions:	Width 660 mm; height 475 mm; depth 285 mm
System height:	1325 mm (with ESL-63)
Weight:	18,5 kg





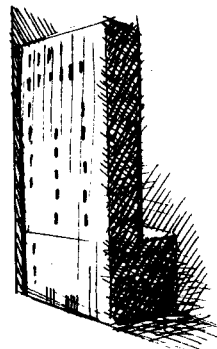
ACTIVE CROSSOVER UNIT

Types:	standard (RCA), balanced (XLR)
Input impedance:	22 k Ω
Output impedance	
- ESL output:	1 k Ω
- SW output:	1...3 k Ω depending on SW level control
Total Harmonic Distortion:	less than 0.03 %
Signal to Noise ratio:	better than 105 dBA
Crosstalk attenuation:	better than 65 dB at 15 kHz
Crossover frequency:	110 Hz
Voltage gain	
- input to ESL output:	on passband ca. 0 dB
- input to SW output:	depends on frequency, adjustable +/- 10 dB
Operating voltage:	15-20V AC / 18-24V DC
Current consumption:	ca. 35 mA (75 mA balanced)
Dimensions:	Width 182 mm; height 50 mm; depth 130 mm
Weight:	700 g standard (900 g balanced)



SUPPLIED ACCESSORIES

- AC-adapter, eight spikes with nuts, eight pads, 5 mm allen key, Instruction manual



Gradient Ltd
Levysepätkatu 28
SF-04440 Järvenpää
Finland
☎ +358 0 2917875
fax +358 0 2916730

Your local distributor / dealer